

DRC

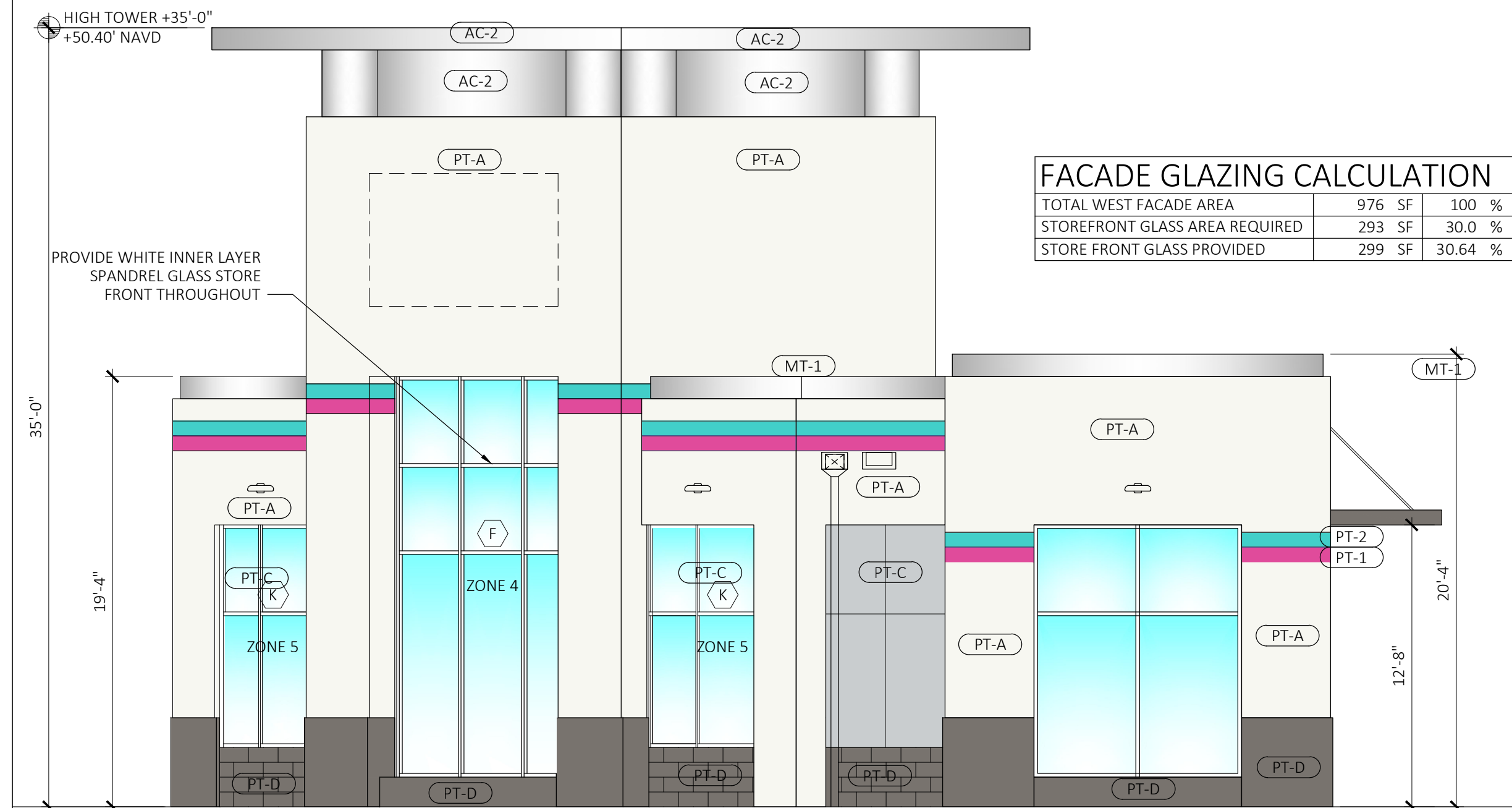
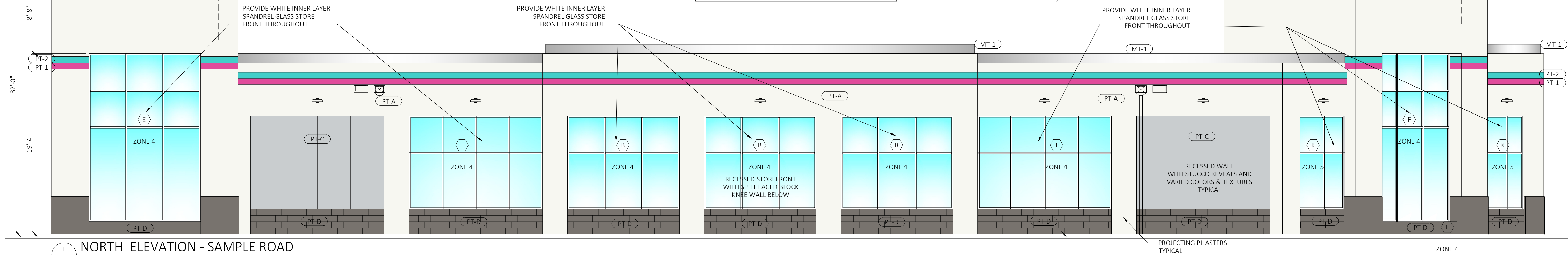
PZ25- 12000013
12/03/2025

GENERAL SIGN NOTE:

ALL SIGNS ARE UNDER SEPARATE PERMIT.
SIGN BOXES SHOWN ARE DESIRED LOCATIONS
FOR REFERENCE ONLY.

FACADE GLAZING CALCULATION

| | | |
|--------------------------------|-----------|---------|
| TOTAL NORTH FACADE AREA | 3354 SF | 100 % |
| STOREFRONT GLASS AREA REQUIRED | 1006.2 SF | 30.0 % |
| STORE FRONT GLASS PROVIDED | 1055 SF | 31.45 % |

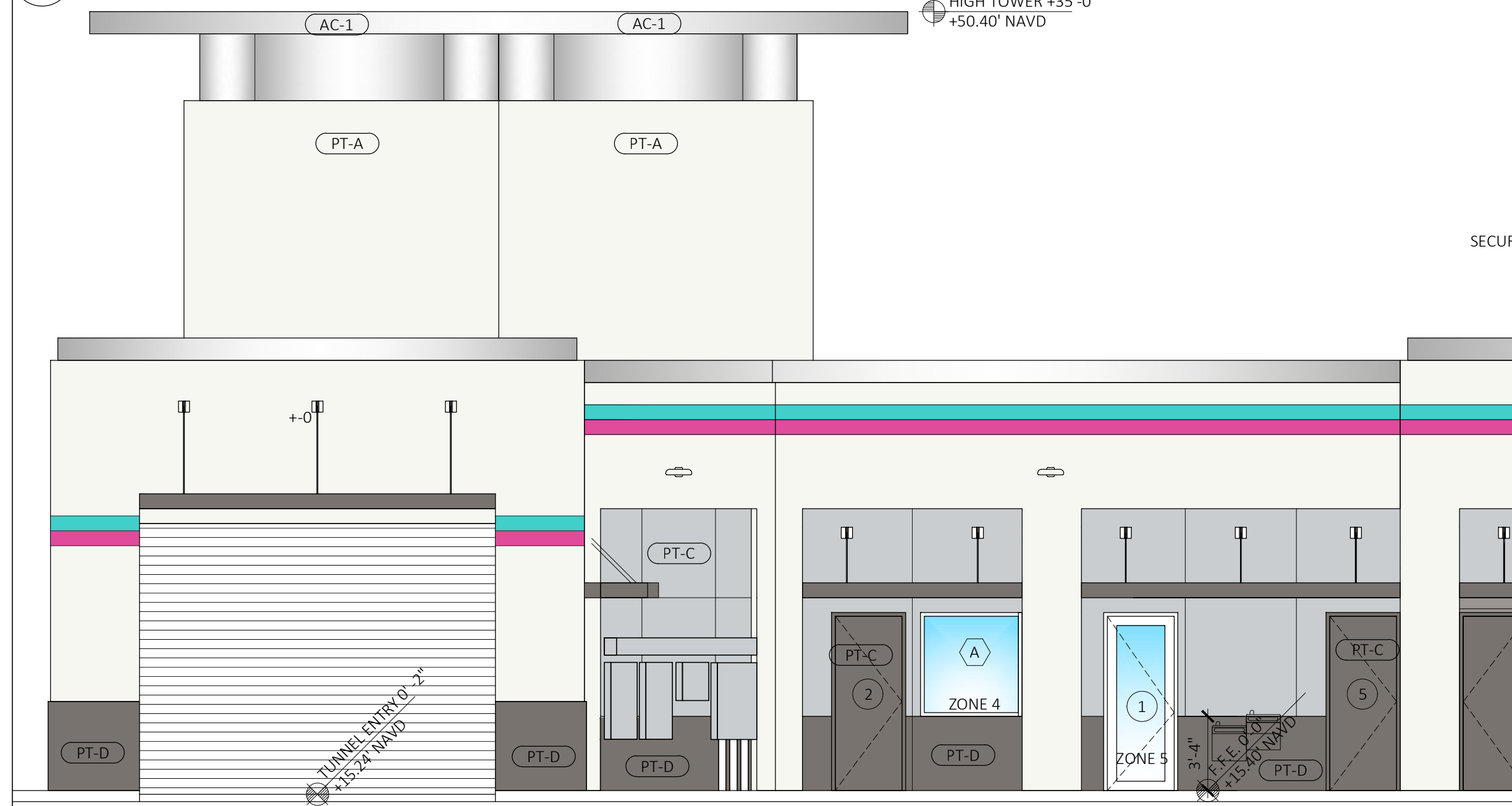
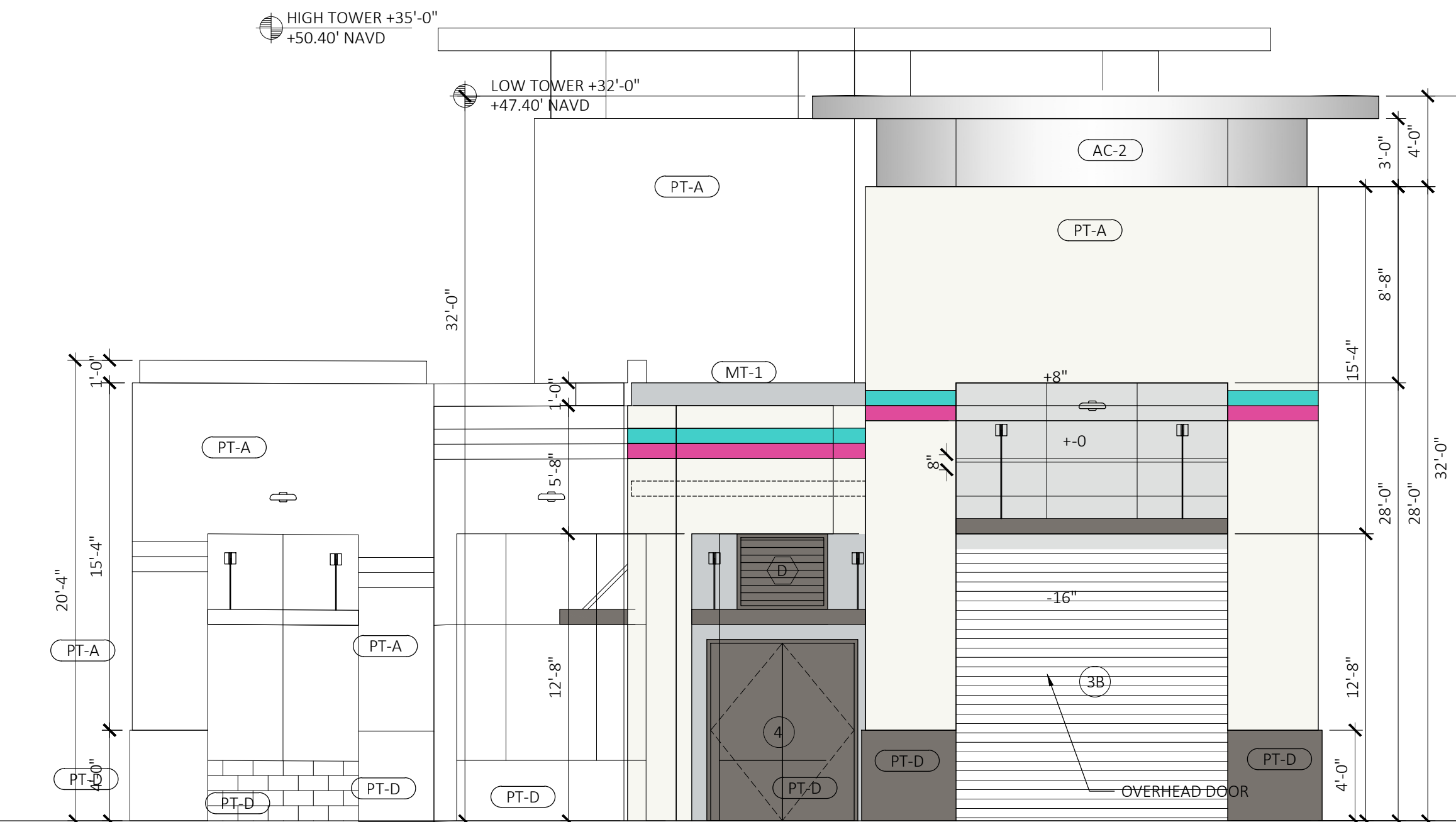


FACADE GLAZING CALCULATION

| | | |
|--------------------------------|--------|---------|
| TOTAL WEST FACADE AREA | 976 SF | 100 % |
| STOREFRONT GLASS AREA REQUIRED | 293 SF | 30.0 % |
| STORE FRONT GLASS PROVIDED | 299 SF | 30.64 % |

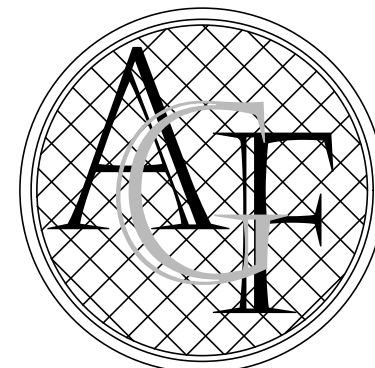
EXTERIOR FINISHES

| | Tag | NAME | Code No. | Manufacturer |
|--|------|-------------------------|-------------------------------------------|--------------------------------|
| | PT-1 | ECW-PINK | Pantone 232 | SHERWIN WILLIAMS |
| | PT-2 | ECW-TEAL | Pantone 3252 | SHERWIN WILLIAMS |
| | PT-A | High Reflective White | SW 7757 | SHERWIN WILLIAMS |
| | PT-B | Rhinestone | SW 7656 | SHERWIN WILLIAMS |
| | PT-C | Evening Shadow | SW 7662 | SHERWIN WILLIAMS |
| | PT-D | Gauntlet Gray | SW 7019 | SHERWIN WILLIAMS |
| | | | SW 7019 RAL Metal Surfaces | KYNAR 500 |
| | WT-E | Resemblance Medium Gray | RB12 Medium Gray Tile 87 Stormy Gey Grout | DALE TILE LATICRETE PERMACOLOR |
| | WF-1 | Bright Silver | PPG UC57638XL | KYNAR 500 |
| | MT-1 | Metal cap flashing | Brilliant SILVER | CAP FLASHING |
| | AC-1 | Roof Overhang | Brilliant SILVER Metallic-PVDF-3 | ALUCO-BOND |
| | AC-2 | REFLECT MIRROR | REFLECT MIRROR | ALUCO-BOND |



4 SOUTH ELEVATION - INTERIOR SIDE

A200 SCALE: 3/16\"/>



FANJUL & ASSOCIATES, LLC
ARCHITECTURE, PLANNING & INTERIOR DESIGN

AA26000725

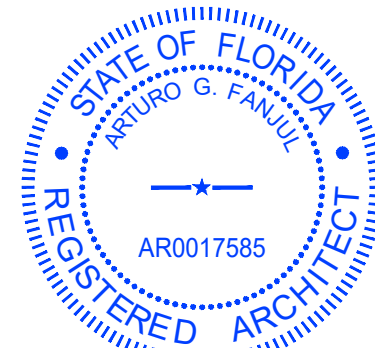
ARTURO G. FANJUL, RA
PRESIDENT

5455 SW 8TH STREET, SUITE 240
CORAL GABLES, FLORIDA 33134

PH. 305 726.8313
FAX 305 356.3686

arturo@fanjularchitects.com

"A BETTER LIFE THROUGH DESIGN"



ARTURO G. FANJUL AR0017585
STATE OF FLORIDA REGISTERED ARCHITECT

This item has been electronically signed and sealed by:

Printed copies of electronically signed, dated, and sealed documents are not considered signed and sealed and the SIA authentication code must be verified on any electronic copies.

DESIGN REVIEW



WEST POMANO

2690 W SAMPLE ROAD
POMPANO BEACH, FL 33069
ID:484221070031/32/32

COLOR ELEVATIONS

REVISION NO.

DATE: 10/24/2025

SCALE: AS NOTED

DRAWN: AGF

CHECKED: AGF

JOB NO. 24-0704

PERMIT NO.

OWNERSHIP

OF THESE DOCUMENTS & SPECIFICATIONS AS INSTRUMENTS OF SERVICE ARE AND SHALL REMAIN THE PROPERTY OF THE ARCHITECT WHETHER THE PROJECT THEY ARE MADE FOR IS EXECUTED OR NOT. THEY SHALL NOT BE USED BY OWNER OR OTHERS ON OTHER PROJECTS OR FOR ADDITIONS TO THIS PROJECT BY OTHERS, EXCEPT BY AGREEMENT IN WRITING AND WITH APPROPRIATE COMPENSATION TO THE ARCHITECT.

A200